

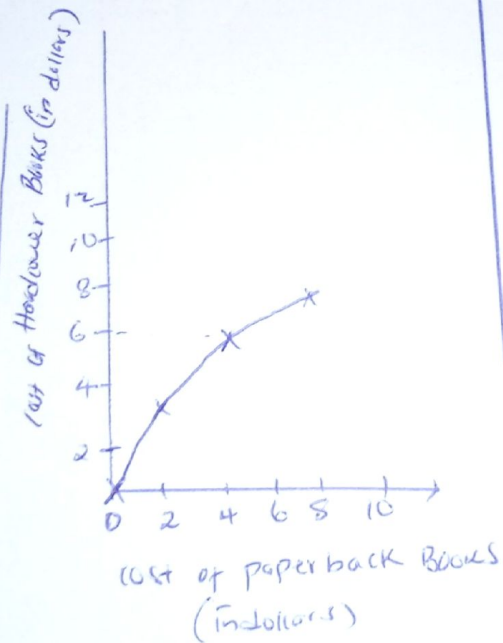
LESSON 20 Quiz

PART A

Cost of paperback Books (in dollars)	Cost of Hardcover Books (in dollars)	Ordered pair
0	0	0, 0
2	3	2, 3
4	6	4, 6
6	9	6, 9

PART B

Cost of Hardcover	Cost of paperback
0	0
2	3
4	6
6	9



PART C

As the cost of paperback books increases the cost of Hardcover books also increases.

Expression

$$5(29 - 14 - 11)$$

$$5(29 - 25)$$

$$5(4)$$

$$= \underline{\underline{20}}$$

Volume

$$(10 \times 10 \times 6) + (5 \times 10)$$

=

$$600 + 50$$

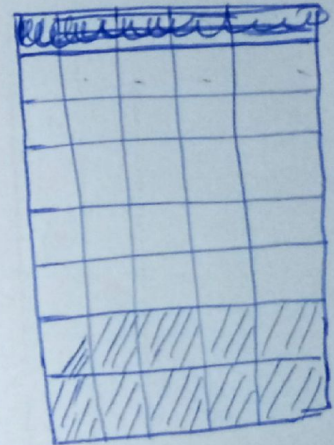
$$= \underline{\underline{650n^3}}$$

$$6 \div \frac{1}{2} =$$

$$6 \times \frac{2}{1} = \underline{\underline{12}}$$

Shading

$$\frac{4}{9} \times \frac{3}{5} = \frac{4}{15} \times \frac{3}{5}$$



$$\begin{array}{r} 9 \\ 3 \overline{) 28} \\ \underline{27} \\ 1 \end{array} = 9 \frac{1}{3}$$

MATHEMATICS

LESSON 20 QUIZ

1. Pattern A: 0, 2, 4, 6

Pattern B: 0, 1, 2, 3

Pattern A are ~~not~~ Divide by 2* the corresponding terms in pattern B.

2.

(a) False (c) True

(b) False (d) True

3.

Kiddie rest	large 2
large (one lost)	6

~~(A) (6, 12)~~

(B) (8, 24)

(C) (12, 36)